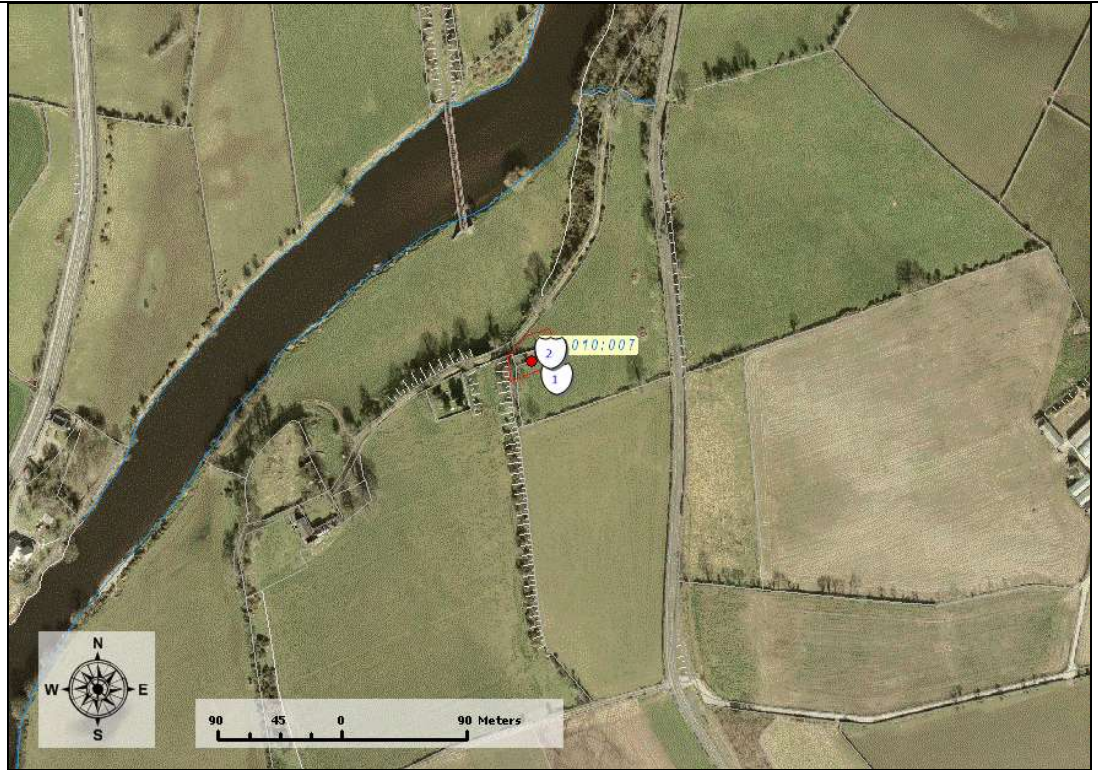


Asset Ref No.	TYR 010:007 Camus Church	
Heritage Type	Built	
	Medieval Church	
Location	OS 6-inch map sheet	TYR 010
	Townland	Camus
	Parish	Camus
	LCA	Foyle Valley
	ITM Coordinates	
	NG Coordinates	H3473091600
Protection Status	<i>SMR; Scheduled Area</i>	
Condition	<i>Good (Substantial remains)</i>	
Ownership (if known)		
Site Description	<p>On a ridge overlooking the course of the Mourne River. The church & graveyard have been cut through by the now disused railway line, with most of the damage occurring to the graveyard. The church is orientated E-W, 20m x 6m. The E gable survives to almost full height. The gable walls are 0.9m thick, whereas the side walls are 0.6m. This, allied to the presence of a tusker in the N end of the E gable & thicker walls around the doorway suggest the side walls may have been rebuilt.</p>	
Landscape Context (setting)	<p><i>Located within the townland of Camus, north of Victoria Bridge, just east of the Mourne River and just west of the B72 road. Situated in pastureland to the south of Camus Bridge (IHR 0001708000), the site was bisected by the Great Northern Railway line (GNR Branch Line Portadown to L'Derry).</i></p>	
Site Appraisal	<p>This is a scheduled site, which is an indication of its significance to the archaeological record of Northern Ireland.</p>	
Sensitivity	<p><i>This site is pastureland, though the church is unlikely to be interfered with by agricultural activity and the associated graveyard is enclosed by a wall.</i></p>	
Associations:	<p><i>This site is not directly associated with any other monuments that are similar in either type or date, however, it is located 1.5km northwest of a court tomb (TYR010:006 Scheduled Monument). The majority of other recorded sites are Standing Stones, with one ringfort (TYR010:009) located approximately 1.6km north and an enclosure (TYR010:012) located approximately 1.75km to the northeast.</i></p>	
Recommendations	<p><i>This site is highly accessible, being close to the B72 road. This site, being an early church site has a definite visitor potential and may be visited as part of a visit to a variety of archaeological sites in this area.</i></p>	

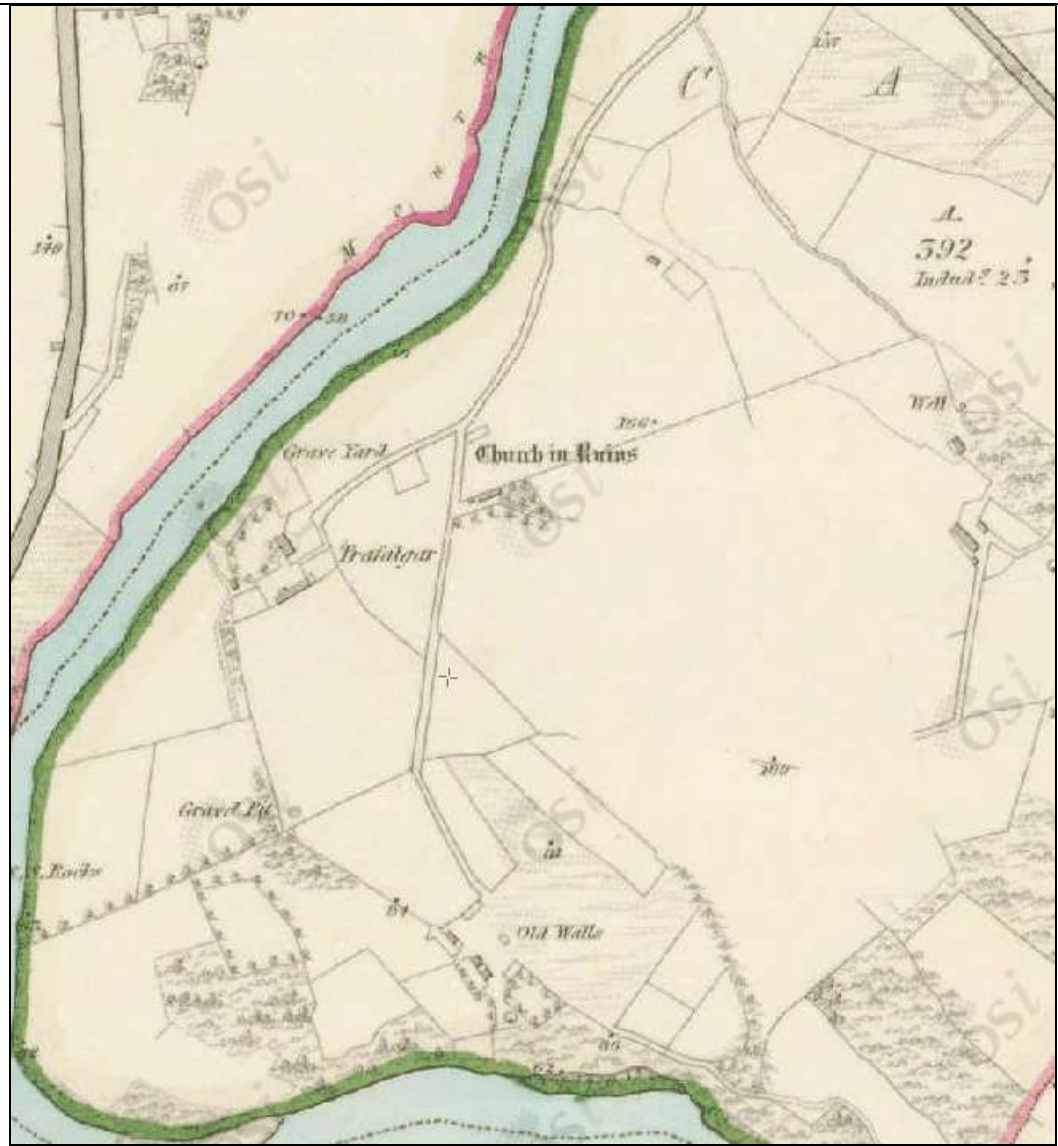
Mapping



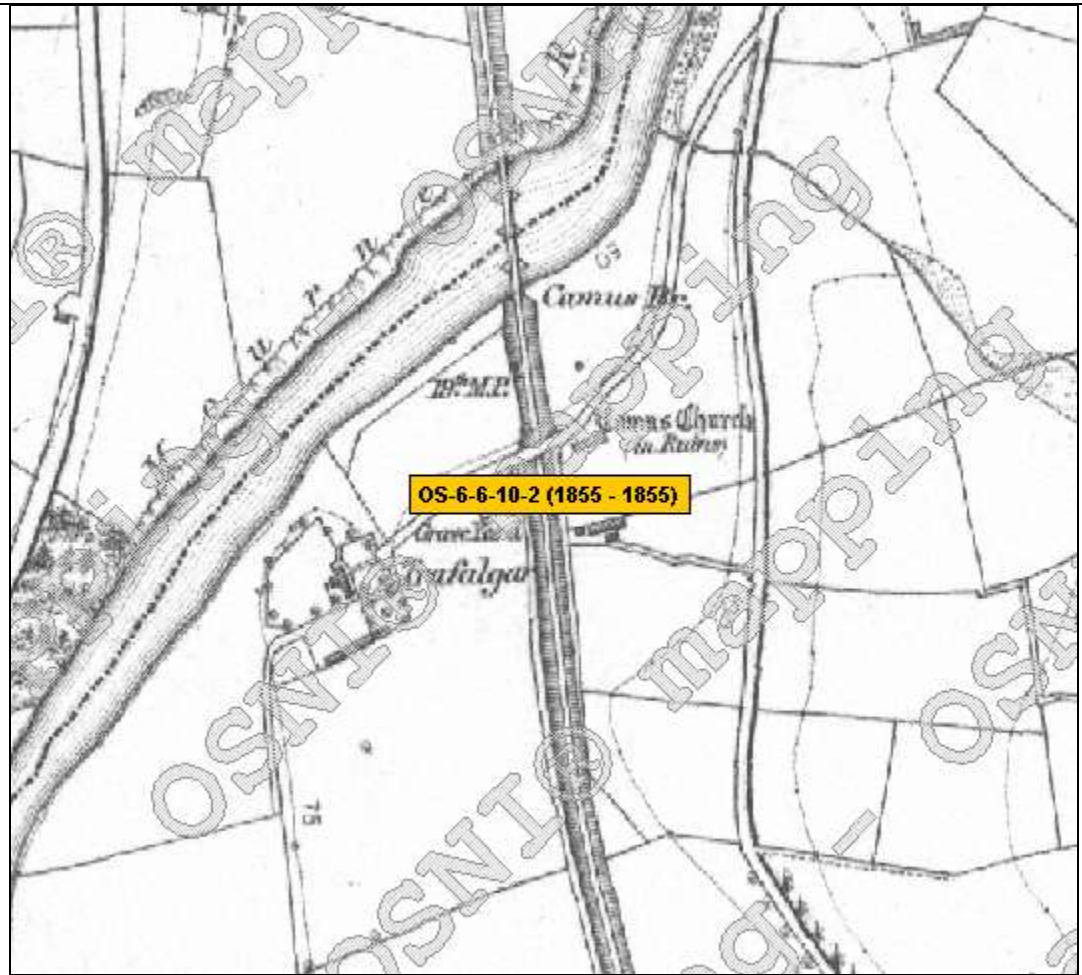
NIEA SMR map: TYR 010:006 is marked as no. 1, TYR010:007 is marked as no.2



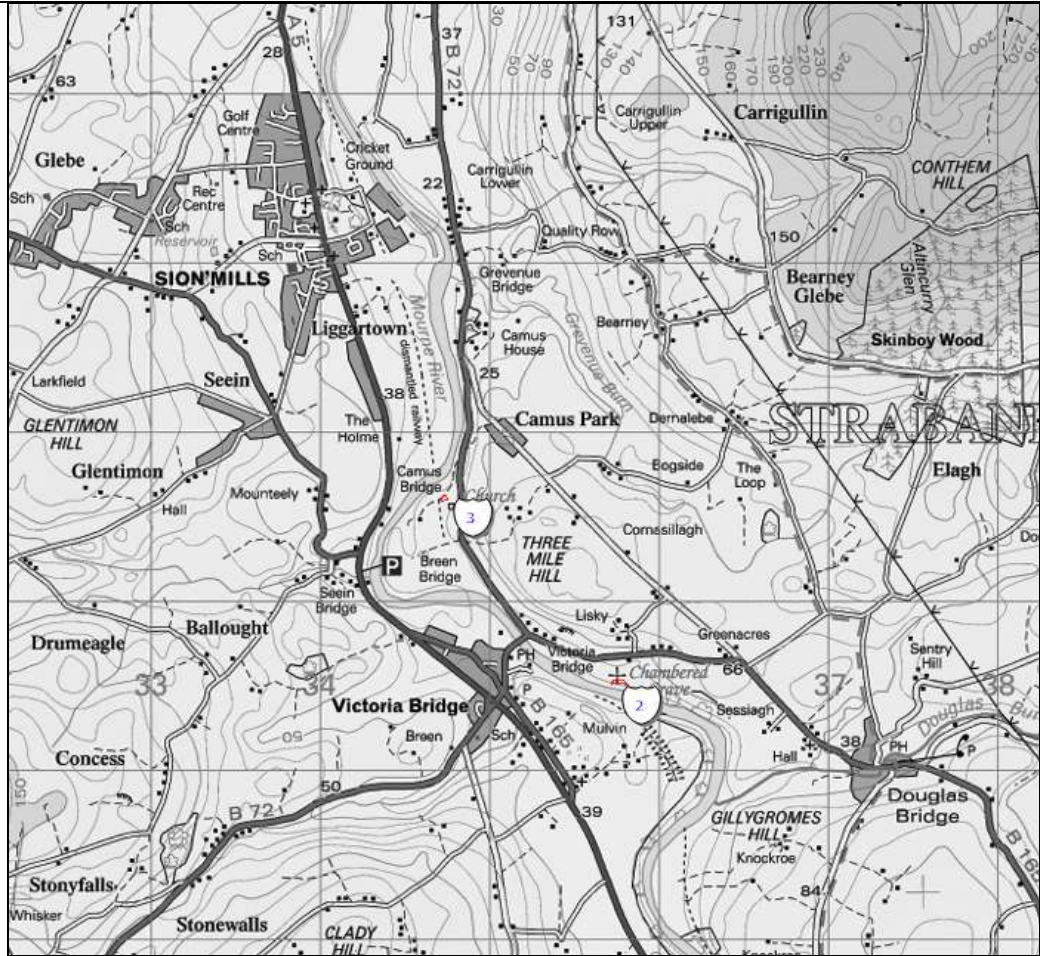
NIEA SMR map: TYR 005:002 is marked as no. 1 & 2



1st ed OS Map extract (1829-1842)(www.osi.ie)



2nd ed OS Map extract (1855)(www.osni.gov.uk)Extended view



OSI 1 to 50,000 Discovery Series Map extract(NIEA Map Viewer) NIEA SMR map: TYR 010:006 is marked as no. 2, TYR010:007 is marked as no.3

References	NIEA SMRs
Plates	
Additional Notes	