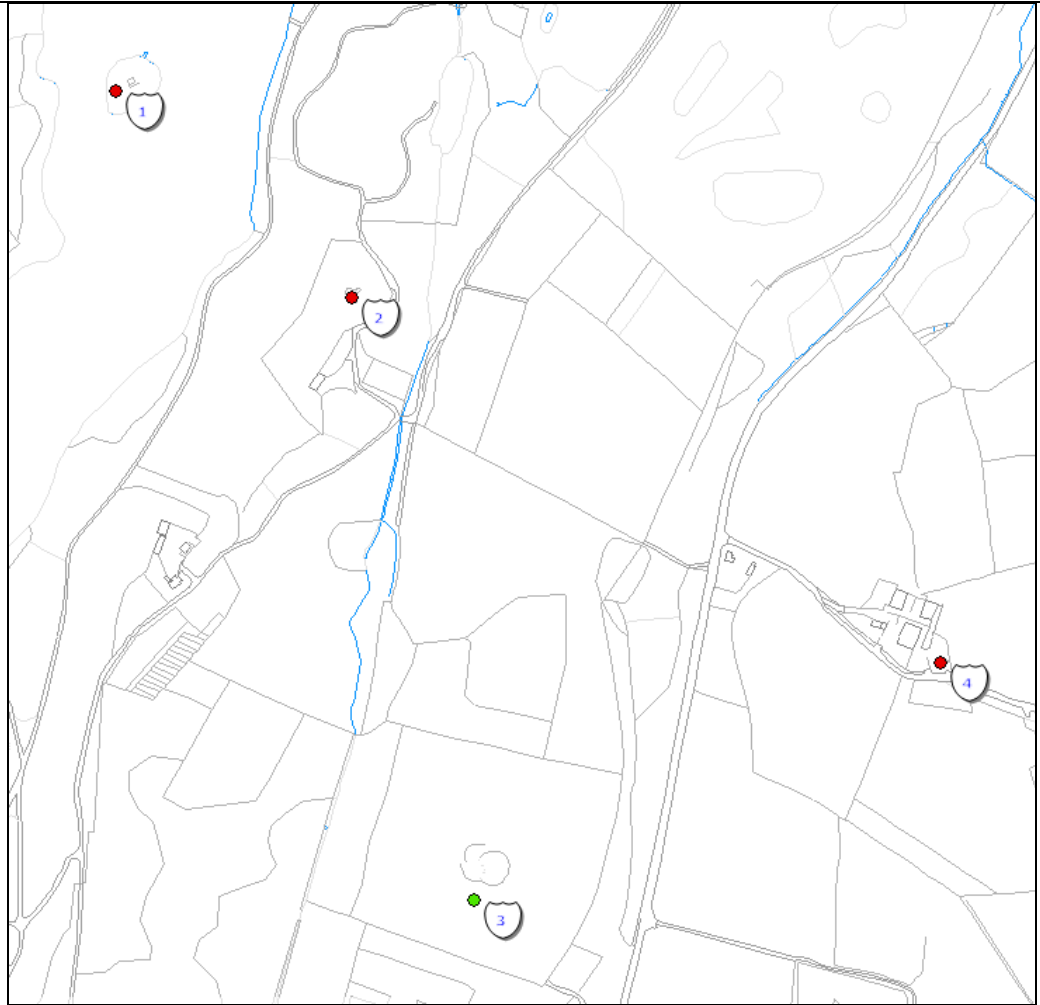


<b>Asset Ref No.</b>	<b>TYR 017:034 Fortified House: Derrywoone Castle</b>	
<b>Heritage Type</b>	Built	
<b>Location</b>	OS 6-inch map sheet	TYR 017
	Townland	Barons Court
	Parish	Ardstraw
	LCA	Foyle Valley
	ITM Coordinates	
	NG Coordinates	H3671083560
<b>Protection Status</b>	SMR; Scheduled Area	
<b>Condition</b>	Some Remains	
<b>Ownership (if known)</b>		
<b>Site Description</b>	The castle was built soon after 1619 & consisted of an L-shaped 3 storey house with a corbelled-out stair. The entrance is at ground floor & this floor also has large windows, giving a domestic rather than defensive appearance. However a large flanker tower with pistol loops covers the house walls. The remains of the castle have recently been conserved and consolidated.	
<b>Landscape Context (setting)</b>	Located within Lough Catherine, approximately 3.5km southwest of Newtownstewart, west of the B84 road, with woodland to the west and farmland to the east. Located approximately 300m southeast of Island Mc Hugh (TYR 017:033) and 650m northwest of Cloghogle Portal Tomb (TYR 017:035).	
<b>Site Appraisal</b>	This is a scheduled site and area, which is an indication of its significance to the archaeological record of Northern Ireland.	
<b>Sensitivity</b>	This site is located in a rural area and therefore is less prone to human interference.	
<b>Associations:</b>	The site located approximately 300m southeast of Island Mc Hugh (TYR 017:033) and 650m northwest of Cloghogle Portal Tomb (TYR 017:035). It may have been associated with the settlement at Newtownstewart located approximately 3.5km northeast, including Newtownstewart Castle (TYR 017:047) and Historic Settlement of Newtownstewart (TYR017:066)	
<b>Recommendations</b>	The site is relatively accessible, though it is rurally situated and may form part of a visitor attraction when grouped together with the nearby scheduled sites TYR017:035 & TYR 017:033, or with the contemporary settlement at Newtownstewart located approximately 3.5km northeast, including Newtownstewart Castle (TYR 017:047) and Historic Settlement of Newtownstewart (TYR017:066)	

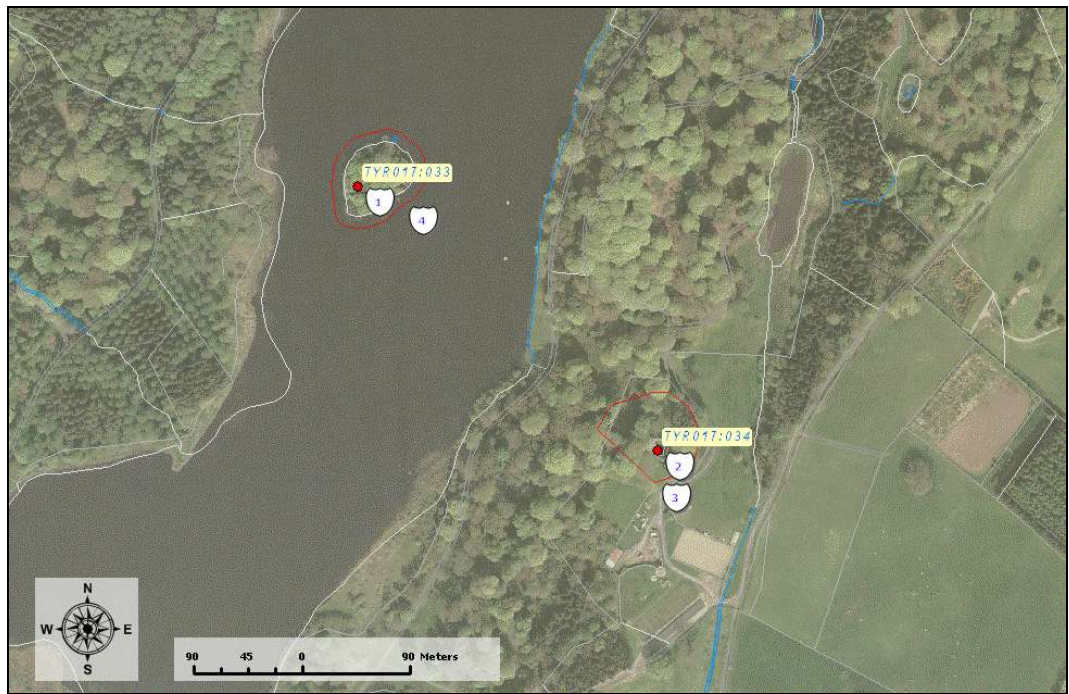
**Mapping**



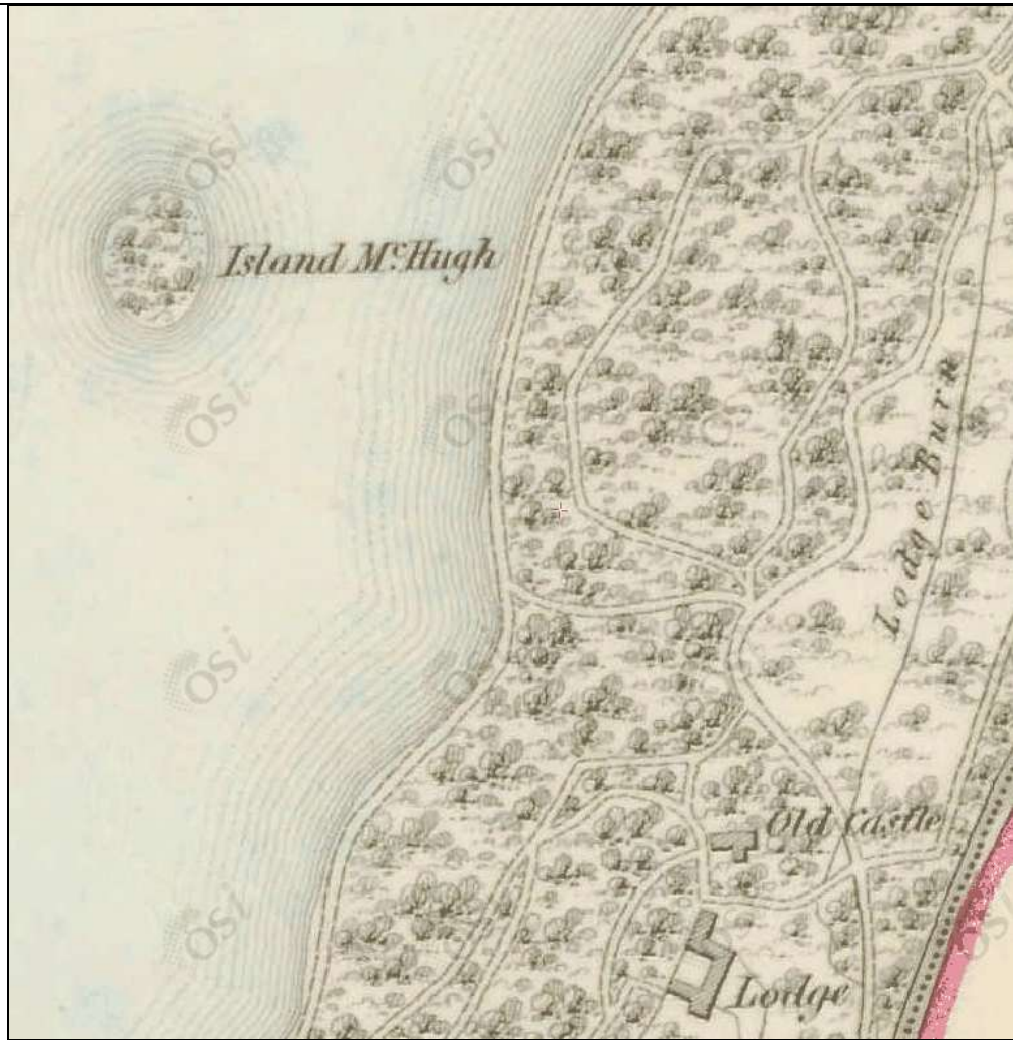
*NIEA SMR map: TYR 017:033 is marked as no. 1, TYR017:034 is marked as no.2, TYR017:038 is marked no.3 and Tyr017:035 is marked no.4*



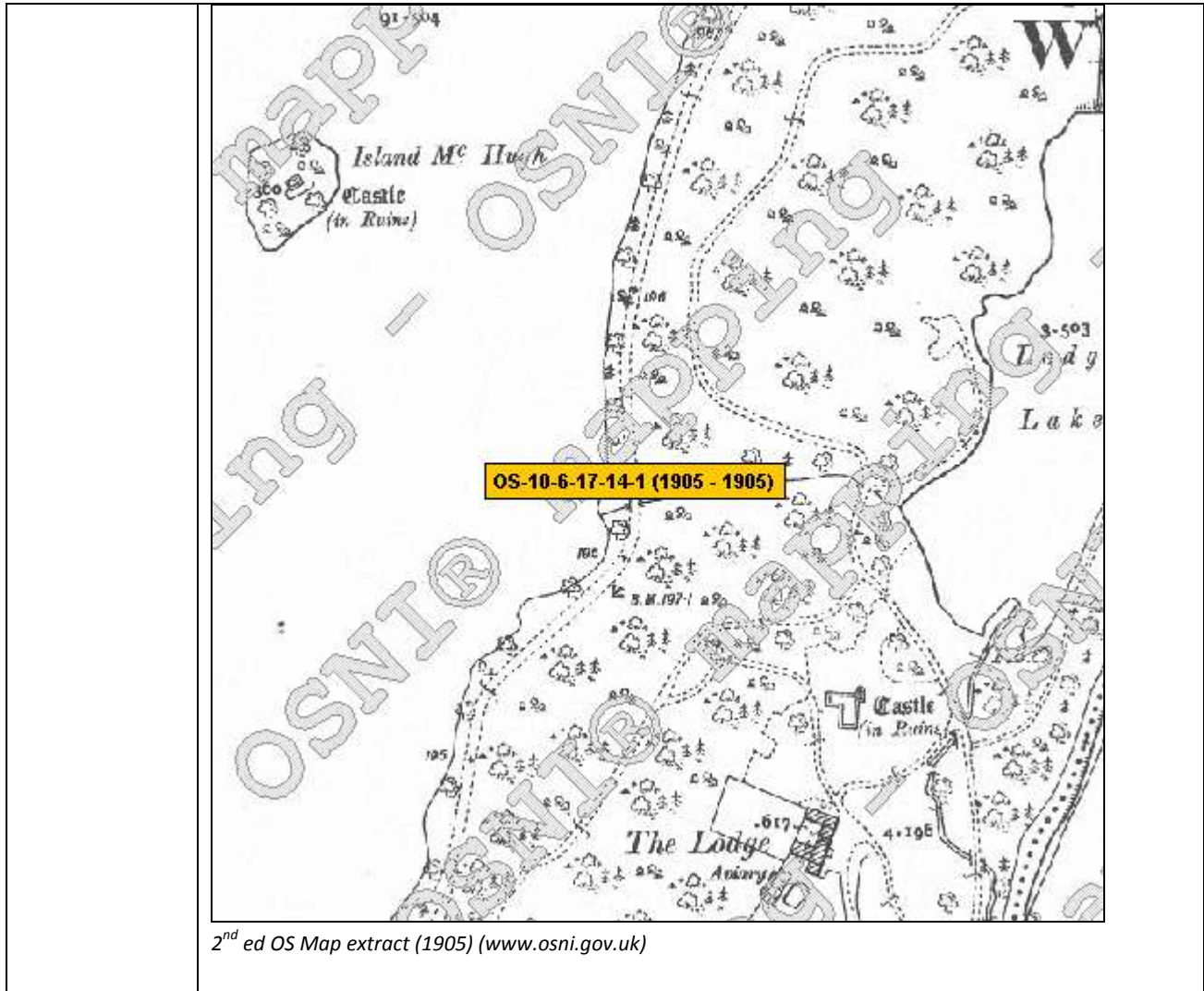
NIEA SMR map: TYR017:034 is marked as no.2

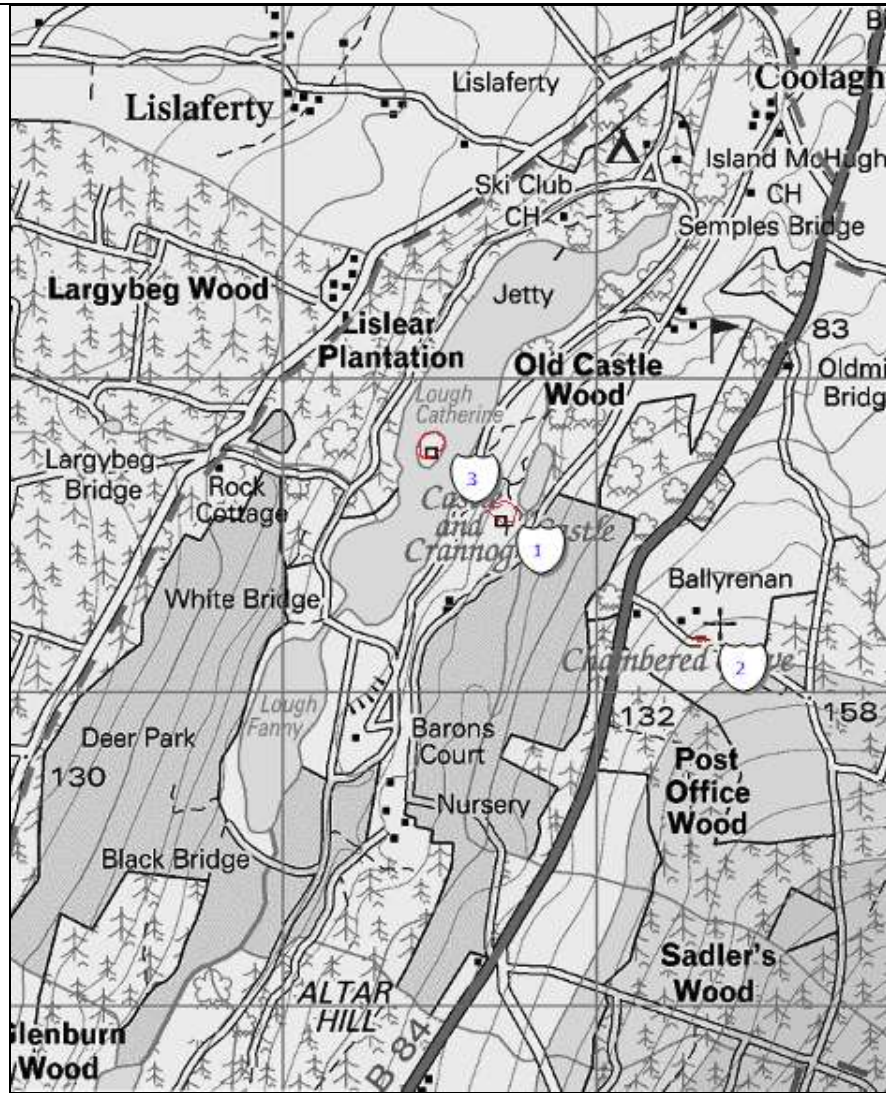


NIEA SMR map: TYR 017:033 is marked as no. 1, TYR017:034 is marked as no.2



1st ed OS Map extract (1829-1842)([www.osi.ie](http://www.osi.ie))





OSI 1 to 50,000 Discovery Series Map extract(NIEA Map Viewer) : TYR 017:033 is marked as no. 3, TYR017:034 is marked as no.1, and Tyr017:035 is marked no.2

References	NIEA SMRs
Plates	
Additional Notes	